

## PS-2600; Wireless Spectrometer Battery Replacement Instructions

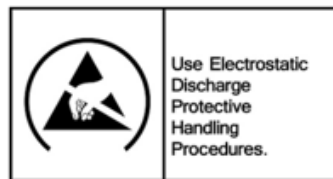
Reference: Battery Model Number: PS-2569 (Part Number 540-079); Li-Poly 2500 mAh



Recommended Equipment: (PS-3299; Battery Replacement Tool Set)



**CAUTION:** Failure to use proper ESD protection could result in damage to the electronics.



Torx T8 Driver



#0 OR #00 Phillips Screwdriver



Replacement Battery

**Step 1:** Position the Spectrometer looking at the back surface as shown below.

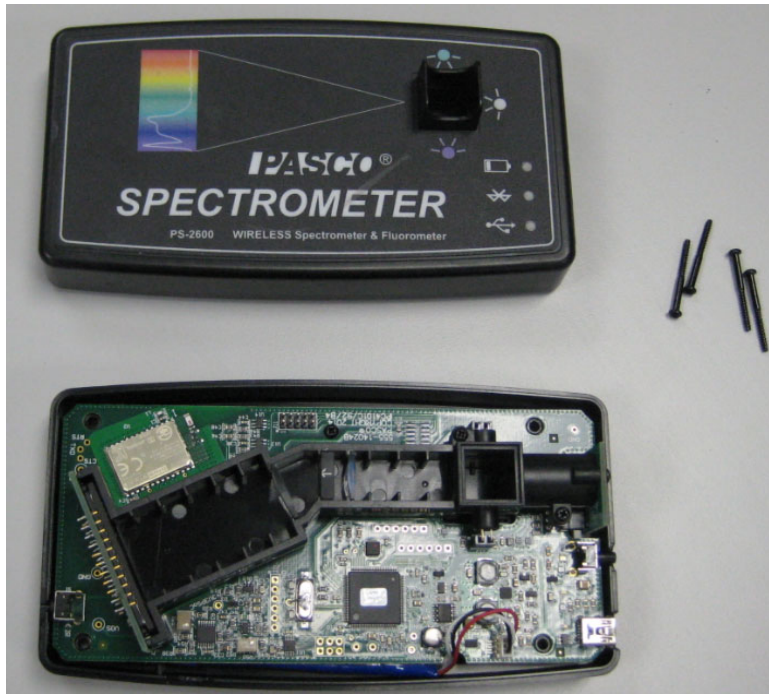
Note the location of the (4) T-8 Screws

T-8 Screws, 4 Places



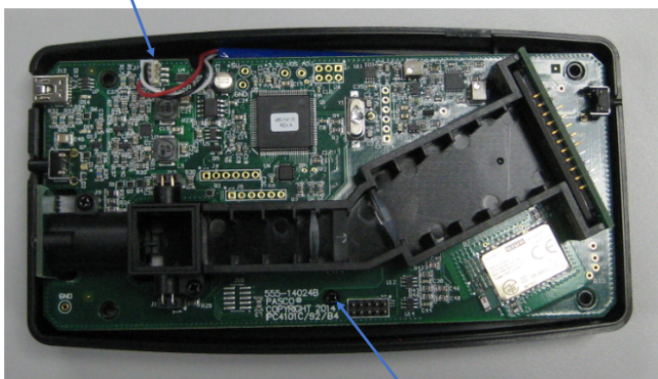
PASCO Form Number	Description	Date		Revision
013-17354	PS-2600 Battery Replacement Instructions	05-05-22	Page 1 of 4	A

**Step 2:** Unscrew the (4) T-8 Screws with a T-8 Screwdriver. While holding the Spectrometer plastic halves together, turn the Spectrometer over and let the (4) screws fall out. Set the Spectrometer down on a flat surface. Put the screws off the side and lift off the top cover.



**Step 3:** Rotate the bottom half as shown.

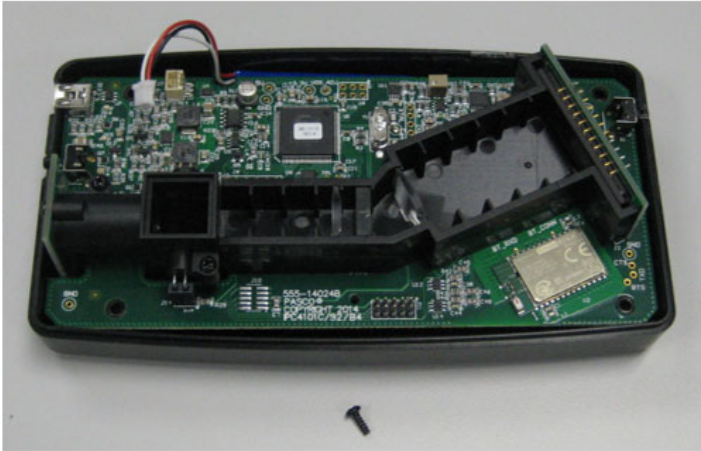
**Battery Connector**



**Phillips Screw, Qty=1**

PASCO Form Number	Description	Date		Revision
013-17354	PS-2600 Battery Replacement Instructions	05-05-22	Page 2 of 4	A

**Step 4a:** Unplug the battery connector and remove the Phillips Screw.



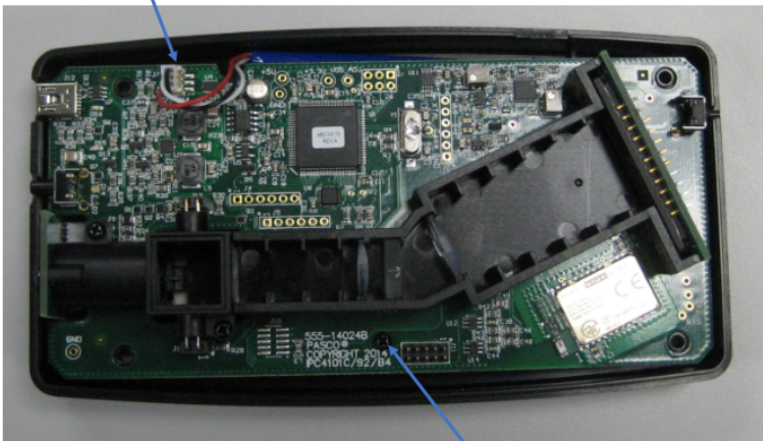
**Step 4b:** Lift the Printed Circuit Board Assembly by the plastic center and set apart.



PASCO Form Number	Description	Date		Revision
013-17354	PS-2600 Battery Replacement Instructions	05-05-22	Page 3 of 4	A

**Step 5:** Remove the old battery and add the new replacement battery at the location shown in the picture above. Replace the printed circuit board above the battery and plug the battery into its mating connector. Secure the Phillips Screw in place.

**Battery Connector**



**Phillips Screw, Qty=1**

**Step 6:** Locate the top cover and while holding the Spectrometer plastic halves together, turn the Spectrometer over and secure the (4) mounting screws in place with the T-8 driver.

**T-8 Screws, 4 Places**



**Battery Replacement and Disposal Instructions (Reference):**

Batteries contain chemicals that, if released, may affect the environment and human health. Batteries should be collected separately for recycling, and recycled at a local hazardous material disposal location adhering to your country and local government regulations. To find a battery recycling drop-off location, please contact local waste disposal service or the product representative.



The battery or batteries used in PASCO products are marked with the European Union symbol for waste batteries that indicate the need for separate collection and recycling. For small batteries, the symbol is printed on the packaging.

If you need further assistance, please contact Technical Support at [support@pasco.com](mailto:support@pasco.com) or through [www.pasco.com](http://www.pasco.com) on chat. To access chat through your browser, please enable all cookies on our website.

PASCO Form Number	Description	Date	Page	Revision
013-17354	PS-2600 Battery Replacement Instructions	05-05-22	Page 4 of 4	A